

## ***VEP BENEFITS***

---

### **- MTC:**

- \* Increase appropriate placement in MTC programs
- \* Increase student motivation and proper work behaviors
- \* Increase instructor's satisfaction due to more appropriate student selections
- \* Increase student satisfaction due to greater opportunity for success in training program
- \* Increase administrator's satisfaction due to projected decrease in failure and behavioral issues

### **- High Schools:**

- \* Vocational evaluation reports assist with placements and IEP transition goals
- \* Documentation of work behaviors, strengths and weaknesses available
- \* Increase communication between MTC and High School related staff mentors
- \* Awareness of academic skills needed for students to succeed in vocational areas
- \* Documentation assists with career exploration and transition planning.

## To learn more about **Massanutten Technical Center**

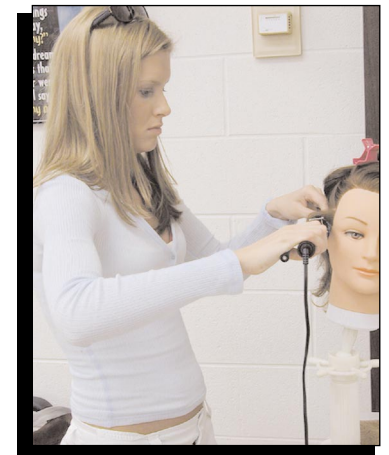
Log on to our Website at  
<http://www.rockingham.k12.va.us/mtc/MTC.html>



or contact us at  
**Massanutten Technical Center**  
**325 Pleasant Valley Road**  
**Harrisonburg, VA 22801**  
**(540) 434-5961**

It is the policy of the Rockingham County School Board to comply with all applicable state and federal laws regarding nondiscrimination in employment and educational programs and services. The Rockingham County Public Schools will not discriminate illegally on the basis of sex, race, religion, national origin, disability, or age as to employment or educational programs and activities.

VOCATIONAL EVALUATION PROGRAM



***Brings Out the  
Best in You!***

# Evaluate your Vocational Education Through the ...

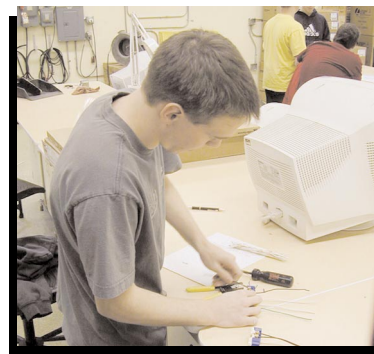
# Vocational Evaluation Program

## ***VEP DESCRIPTION***

Selected students with disabilities participate in a week of afternoon sessions with the evaluator to assess participation in vocational areas at Massanutten Technical Center in the Vocational Evaluation Program (VEP). After extensive career exploration, as evidenced in the student's portfolio, the special education case manager refers the student for VEP. Assessments are conducted in the program areas of MTC to maximize the student's understanding of the work sites and expectations. After the evaluation the evaluator generates a report documenting the student's strengths, weaknesses, interests, and areas of needed improvement in both the vocational domains and general vocational behaviors. The evaluator also makes recommendations for the most programs based on the data collected through formal evaluations, student interviews, and observations. Vocational reports are shared with the student, parents and special education case manager. VEP recommendations enhance MTC consideration.

## ***VEP GOALS...***

- \* Students explore vocational options prior to choosing a program to better ensure compatibility with program requirements thus decreasing poor attendance, behavioral issues and failures
- \* Decrease changes in programming after the start of the school year
- \* Increase student satisfaction and success
- \* Pre-determine academic weaknesses in order to target instruction and performance concerns prior to starting vocational programming
- \* Develop a comprehensive report to be shared with the student's case manager to assist with transition planning
- \* Increase communication between high school and MTC



## ***VEP DESIGN***

- \* Students are scheduled for one-week evaluations at Massanutten Technical Center
- \* Students utilize existing transportation and follow the MTC schedule.
- \* Students participate in VEP during the year prior to expected enrollment at MTC
- \* VEP includes a systematic process for student referral, evaluation and recommendations

